

## Sterilizer – Max Series



# MAX SERIES – FULLY AUTOMATIC

**Application:** • Labs • Institutes • Hospitals



Culture media & liquids



Plastics & metal objects



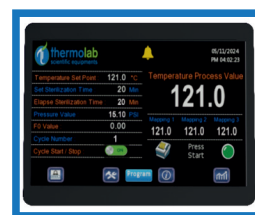
Glassware



Laboratory waste bags

## Standard Features:

- Inside & outer body of Stainless steel 304.
- Microprocessor based HMI 4.3" colored touch screen display.
- Display of temperature sensor and pressure.
- Data logging of control sensor, pressure sensor and FO value.
- Analogue pressure gauge provided for online monitoring of pressure.
- Automatic shut off of cycle after completion of sterilization period with automatic steam exhaust.
- Settable-Cycle Auto Start after Power Resume.
- 2 Nos, of stainless steel perforated basket with Lid.
- Password protected user management software.
- Castor wheels for easy movement.
- Guaranteed Soak with Settable Hold Band.
- Automatic Purging and exhaust.
- Self-inflating type leak proof seal.
- Digital display of working status.
- Pre-programmed cycles.
- **Lid type locking for positive sealing.**



## Safety Features:

- Spring loaded safety valve for over pressure.
- Door safety lock system-Pressure interlock.
- Temperature high & low Audio-visual alarms.
- Low Water Level indication on display.
- Password protected operation.
- MCS for electrical safety.

## Optional Features:

- Data logging of Total 5 sensor.
- Printer Interface for Online Printing on 80 col Dot matrix Printer
- Software connectivity.

## Technical Data:

Model	SM34150GL	SM34200GL
Capacity	150 Liters	200 Liters
Working Pressure	30 PSI / 0.23 Mpa.	
Control System	Colored HMI 4.3" Touch Screen Display	
Working Temperature / Accuracy	<b>134°C / ±1°C</b>	
Uniformity	±1°C	
Timer	1 to 999 minutes (Built in)	
Accessories	2 Nos stainless steel perforated basket with lid.	
Power	4KW/230V AC/50Hz – 1 Phase	6KW/230V AC/50Hz – 1 Phase
Chamber Size (Internal)	Dia. 340 x 550 H (mm)	Dia. 400 x 600 H (mm)
Overall Dimension (mm)	510 x 470 x 1130	510 x 470 x 1130
Packing dimension (mm)	590 x 590 x 1280	590 x 590 x 1280
Net Weight/ Gross Weight	110/130 kg	120/150 kg

## Global Presence In More than 85 Countries



### Awards

- Award for Leaders in Sustainable Stability Chambers For reducing electrical consumption by 60% & water consumption by 90%
- Best Innovation In Sustainability
- India Design Mark Award



Complete after sales service provided such as installation, calibration, validation, repairs, modification & annual maintenance contracts.



This NABL accredited laboratory is equipped to carry out on site calibration & validation of various parameters like temperature, relative humidity, pressure, vacuum, dimension etc.

## Thermolab Scientific Equipments Pvt Ltd.

### Corporate Office:

Plot No.19/20/40/41, Vasai Municipal Industrial Area, Umela Road, Vasai (West),  
Dist. Palghar - 401 207, Maharashtra, INDIA.

(M) : +91 88888 08300 (T) : +91 - 250 - 2322164, 2321627, 2310912, 2321656, 2310325 (E) : [solutions@thermolabgroup.com](mailto:solutions@thermolabgroup.com)

[www.thermolabscientific.com](http://www.thermolabscientific.com) | [www.thermolabgroup.com](http://www.thermolabgroup.com)



Unit II



"As part of our continuous improvement program, design specifications and photographs given in this brochure are subject to change without notice and without attracting obligations for pre modification to equipment previously sold"

Unit I

